

**Adaptil<sup>®</sup> is clinically proven to help dogs deal with stressful situations.**

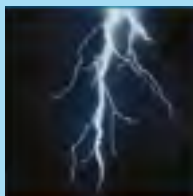


**Best behavior starts here.™**

 /AdaptilUS [adaptil.com/us](https://adaptil.com/us)



All kinds of things can create stress for your puppy or dog, including fireworks and other loud noises, new people, car rides to the veterinarian, and even being left alone in their crate.



**Adaptil® can help calm dogs in stressful situations like:**

- Boarding
- Hospitalization
- Introducing a new pet
- Meeting unfamiliar people
- Moving to a new home
- Rearranging furniture
- The presence of other animals
- Transportation / Travel
- Veterinary visits
- Car travel

## Stressful situations can lead to unwanted behaviors like:

- Excessive barking
- Destroying household items
- Soiling in the house
- Hiding
- Trembling
- Whimpering
- Panting
- Crying at night
- Cowering

**FACT:**

*Many veterinarians use Adaptil® in the hospital to help calm dogs and reduce the stress of the hospitalization.*



## How Adaptil® works.

Adaptil® is a synthetic copy of the pheromone a puppy's mother emits after birth to calm and reassure her puppies. These pheromones can have this same calming effect on adult dogs in stressful situations.



The dog takes in the pheromone through special nerve bundles.

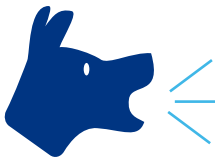


These signals are sent to the brain.

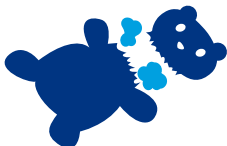


The calming message facilitates a more relaxed state.

Clinical studies prove what a difference Adaptil® can make in a month for dogs experiencing separation distress.



- Helps reduce or eliminate vocalization (barking, whining, etc) in **75%** of dogs.<sup>1</sup>



- Helps reduce or eliminate destructive behavior in **95%** of dogs.<sup>1</sup>



- Helps reduce or eliminate house soiling in **75%** of dogs.<sup>1</sup>

All dogs are different, results may vary.  
For best results use for 30 days.



### Fireworks and Noise Fears

Within a month, owners report a 93% improvement in fearful reactions (hiding, trembling, etc).<sup>2</sup>



### Travel Stress

Proven to help reduce the signs of stress during car travel (shaking, panting, vomiting, etc).<sup>3</sup>



### Veterinary Visits

Significantly and quickly decreases the signs of anxiety in the waiting room and during the veterinary exam.<sup>4</sup>

<sup>1</sup>(Gaultier et al, 2005)

<sup>2</sup>(Shepherd, 2003)

<sup>3</sup>(Gaultier, 2003)

<sup>4</sup>(Mills, 2006)

There's an Adaptil® product to help no matter the situation or place.

## Collars

Great for use during training and socialization to help your dog or puppy feel secure and ready to learn. Your dog's body heat releases the pheromone from the collar, which lasts for 30 days.



## Diffusers

Ideal for households with more than one dog or to help new puppies feel more comfortable in their new home. Place the diffuser in the room where the dog(s) spend the most time. Treats up to 700 sq. ft. and lasts up to 30 days.

## Wipes

Convenient for helping dogs feel safe and secure during travel. Reapply every 4 - 5 hours.



## Sprays

Perfect for spot-treating bedding, toys, car interiors, etc. to provide comfort for puppies. Spray 8 - 10 pumps on the object and wait 10 - 15 minutes for alcohol to evaporate before exposing the dog. Lasts 4 - 5 hours.

Ask your veterinarian if Adaptil® is right for your dog.

 **ADAPTIL®**

Best behavior starts here.™

 /AdaptilUS [adaptil.com/us](http://adaptil.com/us)

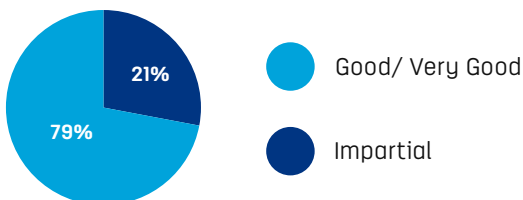


© 2015 Ceva Animal Health, LLC, 8735 Rosehill Road, Suite 300, Lenexa, KS 66215  
Adaptil® is a registered trademark of Ceva Santé Animale S.A.  
Best behavior starts here.™ trademark is the property of Ceva Animal Health, LLC.  
ADP-08-16 01/16

## Puppy Training

With Adaptil®, puppies are less fearful and have a better response to training. Effects can still be seen even after a year.

## Puppy socialization score 1 year after training



(Denenberg, S & Landsberg, 2008)

## Adaptil® helps puppies adjust to their new homes more quickly.

Adapting to a new home can be stressful for puppies. They've left their mother and their siblings for the first time and are trying to adjust to a new family.

Within three days of adoption, puppies with Adaptil® were significantly more settled compared to placebo.

- They stopped crying at night 66% faster<sup>5</sup>
- They had disturbances an average of 3 nights compared to 9<sup>5</sup>
- They were 75% less likely to vocalize during the day<sup>6</sup>

## Adaptil® helps puppies adjust to new homes significantly faster.

<sup>5</sup>(Taylor & Mills, 2007)

<sup>6</sup>(Gaultier, 2008)



**Adaptil® is available in a collar, diffuser, spray and wipes to help you keep your dog calm in just about any situation. Here are some hints on the best way to use each.**

Situations		Adaptil Collar	Adaptil Diffuser	Adaptil Spray	Adaptil Wipes	Recommended Duration of Use
Changes to Environment	<ul style="list-style-type: none"> <li>• New Arrivals (Baby, Pets, etc)</li> <li>• New / Rearranging Furniture</li> <li>• New House</li> <li>• Remodeling</li> </ul>	Supplement	<b>Ideal</b>	Supplement		Begin use 24 hours prior to changes and use for a minimum of 1 month
Crating/Kenneling/Boarding		<b>Ideal</b>		Supplement		Continuously
Grooming				<b>Ideal</b>	Supplement	Spray 8-10 pumps on a bandana for the dog to wear pre and post grooming
Puppy Training & Socialization		<b>Ideal</b>	Supplement			Beginning as soon as you get the puppy, use continuously for the first year of life
Home Alone / Loneliness Separation Distress		Supplement	<b>Ideal</b>	Supplement		Place diffuser in room where dog spends most time
Stressful Situations	<ul style="list-style-type: none"> <li>• Fireworks</li> <li>• Thunderstorms</li> <li>• Parties</li> <li>• Holidays</li> </ul>	Supplement	<b>Ideal</b>	Supplement		Begin use 24 hours prior to event, continuing for a minimum of 1 month
Travel / Transportation		Supplement		<b>Ideal</b>	Supplement	Re-apply every 4-5 hours
Veterinary Exams			Supplement	<b>Ideal</b>		Apply to bandana to place around dog's neck



\*Never spray or wipe the pet directly and do not spray on food. Ideal = the Adaptil product best suited to the situation. Supplement = use for additional support.



Diffuser:	Collar:	Spray:	Wipes:
<p>Plug diffuser in room where the dog spends the most time. Treats up to 700 sq. feet. Available in a 30 day refill.</p>	<p>Collar is activated by body heat. Collar will not work while wet, but begins working again when dry. Fit collar snugly, no more than 2 finger width excess.</p>	<p>Perfect for spot treating areas. Apply 8-10 pumps of spray to area. Can spray furniture, bedding, toys, crates, car interiors, etc. Spray lasts 4-5 hours.</p>	<p>Ideal for travel and spot treatment of hard surfaces. Effects last 4-5 hours but re-apply as needed.</p>



## When Adaptil® won't work (Or won't work alone):

1. When the behavior is not stress related.
2. When the behavior has been present for a very long time or the problems are severe. Seek advice from a qualified behaviorist.
3. Overexcited dogs. An overexcited puppy is not going to be calmed down by Adaptil® alone. In this case, seek advice from a qualified behaviorist along with the use of Adaptil®.
4. When your dog has an underlying medical condition. Before trying Adaptil® please take your dog to your veterinarian for a check up.
5. Aggression towards other dogs or humans is a very serious problem. Seek advice from a qualified behaviorist.

